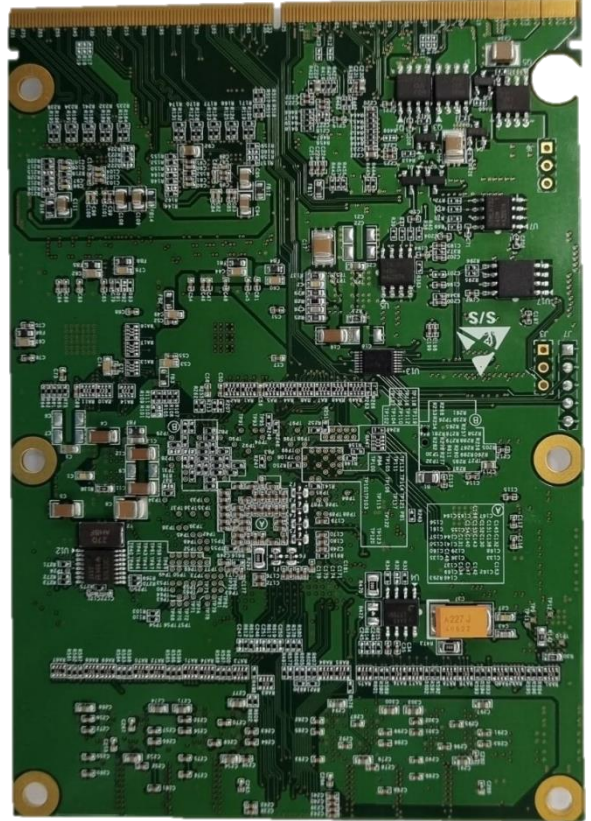


# STD-SM-733

3



전면

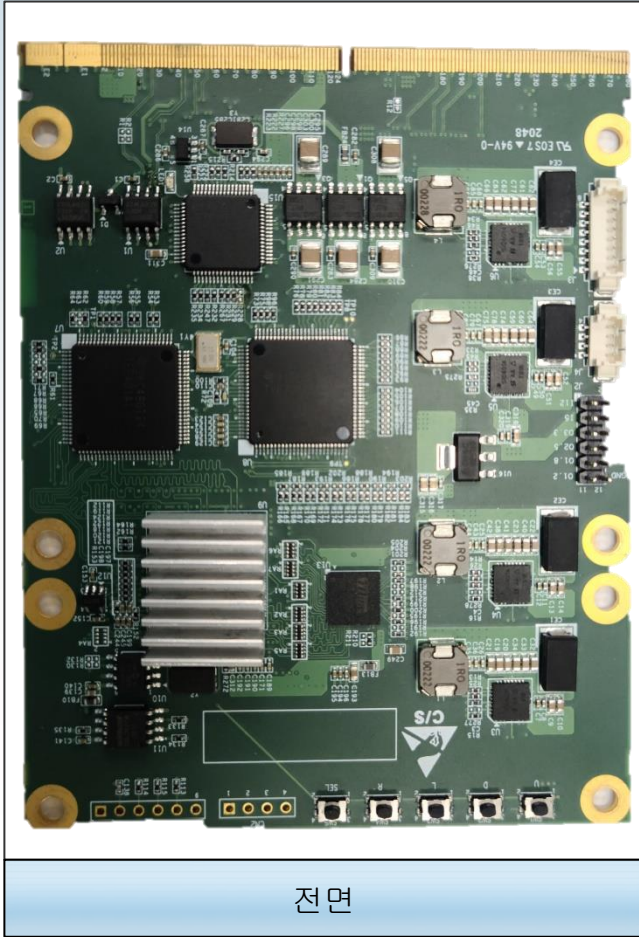


후면

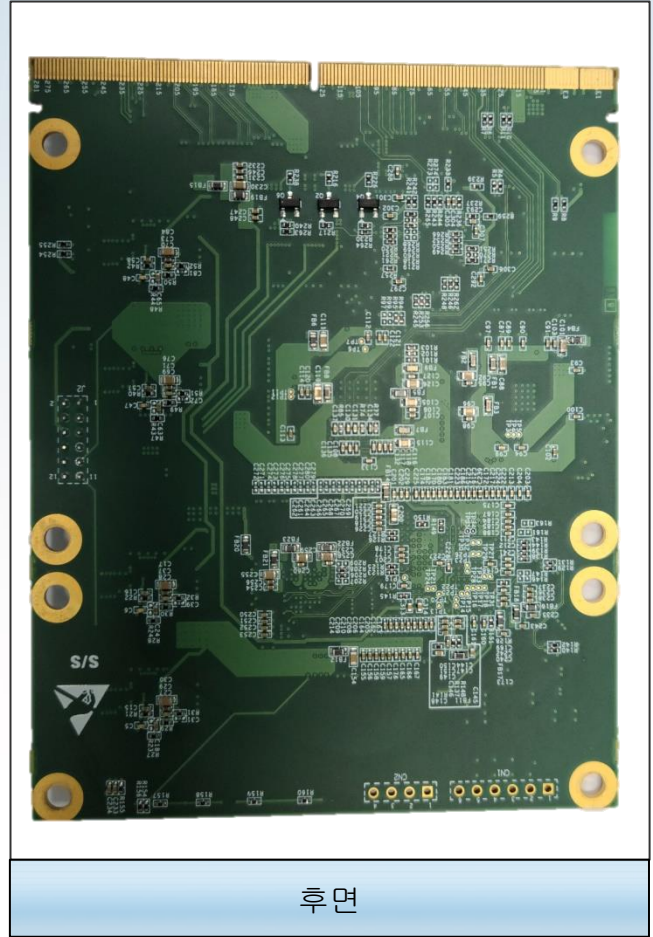
## 주요 기능

- INPUT : DVI(HDMI) 2CH / RS-170 2CH
- OUTPUT : DVI(HDMI) 1CH / RS-170 1CH / LVDS 2CH
- Up to 4K60 Resolution
- 4-Channel overlay
- Alpha blending
- Mirror/Flip/90-degree image
- Bitmap OSD
- PIP / PBP Display
- 입력 대비 출력 화면 설정

# STD-SM-400



전면



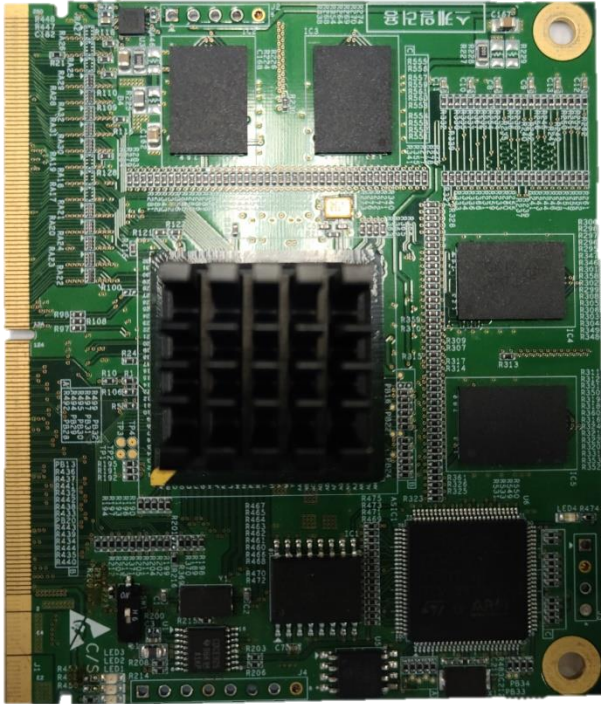
후면

## 주요 기능

- INPUT : DVI(HDMI) 1CH / VGA 1CH
- OUTPUT : LVDS 1CH
- Up to 4096x2160@30fps
- Freeze, Mirror & Flip
- Deinterlacing
- OSD Function
- PIP or POP Display
- 입력 대비 출력 화면 설정



# STD-SM-734



전면



후면

## 주요 기능

- INPUT : RGB/YUV4:4:4 30 bits 4CH
- OUTPUT : LVDS 4CH
- Up to 4K60 Resolution
- 4-Channel overlay
- Alpha blending
- Mirror/Flip/90-degree image
- Bitmap OSD
- PIP / PBP Display
- 입력 대비 출력 화면 설정